



A1c: More than Just a Number

The significance of HbA1c for monitoring the glycemic status in the control of diabetes has increased with the continuing rise in the number with the disease.

From Tosoh, a world leader in HPLC technology, comes our current model of glycohemoglobin analyzers: Tosoh Automated Glycohemoglobin Analyzer HLC[®]-723G8.

Providing fast HbA1c results, with CVs of less than 2%, the G8 is the right solution for improving diabetic patient care because your patient is *more than just a number*.

TOSOH BIOSCIENCE

www.tosohbioscience.us

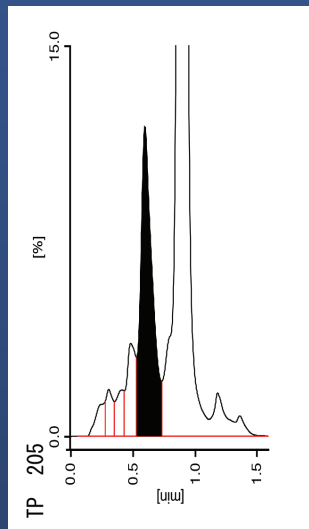
For In Vitro Diagnostic Use; Rx Only



HbA1c

HbA1c is used in three applications:

- For identifying individual at risk for developing diabetes
- For aid in diagnosis of diabetes
- For monitoring and following treatment



Separation Of Labile And Stable Hba1c

Tosoh's HPLC Analyzer Series provides direct determination of stable HbA1c (SA1c). Through Tosoh's developed non-porous, ion-exchange HPLC column, there is clear separation of the labile and stable HbA1c.

The HbA1c results are not clinically affected by the most common hemoglobin variants, HbF or derivatives such as labile HbA1c, carbamylated or acetylated hemoglobin due to separation based on charge. HbA1c is reportable in the presence of HbS, HbC, HbD and HbE across the measuring range.

G8 HPLC ANALYZER

The Tosoh G8 was cleared by the FDA as the first HPLC instrument to be used as an aid in diagnosis of diabetes and identifying patients who may be at risk for developing diabetes.

The ion-exchange methodology is used for measurement of HbA1c and yields direct determination of stable HbA1c (SA1c). Ion-exchange HPLC was used in the Diabetes Control and Complications Trial study undertaken in the United States.

With over 30 years of HPLC experience, the G8 analyzer continues to use its in-house developed, state-of-the-art, non-porous ion-exchange HPLC column to provide clear and true separation chromatography without the loss of precision or resolution on the chromatogram. Our methodology does not require pretreatment of the sample or additional mathematical algorithms.

Chromatography is a timely art and *more than just a number*.

SIMPLE

- Touch-screen operation
- Fully-automated operation
- Positive sample identification
- No sample pre-treatment

SPEED & EFFICIENCY

- Analysis time of 1.6 minutes
- Automated daily maintenance
- Real-time result reporting

ACCURACY & PRECISION

- Less than 2% CVs
- Direct determination of SA1c
- HbA1c is reportable in the presence of HbS, HbC, HbD and HbE
- NGSP Certified

FLEXIBLE

- 90 or 290 sample loader
- Lab automation model available
- Flexible tube size on same rack

Tosoh Automated Hemoglobin Analyzer HLC-723G8 Available in Two Configurations

Line automation models available for connection to a trackline.



G8 90 Sample Loader



G8 290 Sample Loader



"Tosoh Bioscience" and "HLC" are registered trademarks of Tosoh Corporation

Tosoh Bioscience, Inc.
6000 Shoreline Court, Suite 101
South San Francisco, CA 94080
Tel: (800) 248-6764
Fax: (650) 615-0415
www.tosohbioscience.us